

ICE

ICE^{CP} 25mK Cold Probe

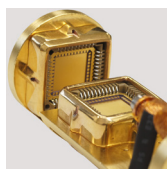
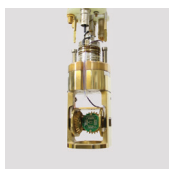


The ICE^{CP} 25mK Cold Probe is a dilution insert aimed at achieving fast sample turnaround times at millikelvin temperatures.

The ICE^{CP} 25mK is compatible with both top loading systems into a VTI or continuous flow systems. When paired with an ICE cryostat, the probe can utilise dual-cool technology for an automated cooldown, requiring minimum input from the user during probe changes.

DRY ICE^{CP} 25mK

BASE TEMPERATURE	25mK
SAMPLE COOLDOWN	6 hours to base
COOLING POWER	50 μ w at 100mK (70mm version)
TEMPERATURE STABILITY	\pm 0.1mK at 28mK, \pm 5mK at 0.1K
SAMPLE SPACE	Options for \varnothing 50mm or 70mm
DIAGNOSTIC WIRING	24-way Fischer connectors
CUSTOMER DC WIRING	Constantan, Manganin or Copper looms fitted on request
COAX	SS, SC, C, BeCu and NbTi available. Other COAX available on request.
OPTICAL FIBRES	Available with FC-APC feedthroughs
ACCESS TO SAMPLE SPACE	Top Loading Probe
SAMPLE ENVIRONMENT	Vacuum
MAGNETIC FIELD	Split-pair, 2D and 3D vector rotate and solenoid magnet options available



Compatible with our range of sample holders and chip carriers.